



LABELLE SUPPLY CO. LTD.

Serving the shoe trade since 1948

7278 Curragh Avenue, Burnaby, British Columbia, Canada V5J 4V9

Tel: 604-253-6301 Toll Free: 1-800-663-9893 Fax: 604-253-7253

Website: <https://labellesupply.com> E-mail: llabelle@shaw.ca



LIMITED INVENTORY ON THIS PAGE

These styles or colours will be discontinued from the Vibram Sole Factor program. Please phone for availability.



DESERT BOOT | 2602

A blocker sole in Vibram Gumlite with the classic crepe design. Its qualities are lightness and grip. Forepart: 9mm Heel: 26mm



295696+

Code	Size
390	39-40

MONTAGNA | 1149

Thick commando rubber soles for shoe & boot repairs. Forepart: 12mm Heel: 27mm

8003+

Code	Size
356	35-36 (Red)
378	37-38 (Red)
390	39-40 (Red)
412	41-42
434	43-44
456	45-46
478	47-48



50 Black 54 Red

MINI RIPPLE | 342C

Rubber compound. 7.4mm thick.



800400+

Code	Size
007	7.5

Black

PREDATOR | 625K

Running Sole. Designed for hiking. 6.4mm thick.



800073+

Code	Size
006	6

Black/Gum

ZEGAMA | 1474S

On rock climbing approach shoes. 6mm thick.



8001+

Code	Size
458	45-48
491	49-51

54 Red 57 Green

NEW YORK | 2074

A rubber blocker whose casual design is perfectly mixed with a fashionable line. Forepart: 5.3mm thick Heel: 6.4mm thick



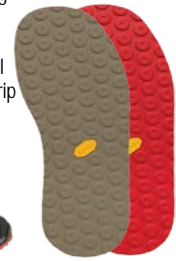
8004+

Code	Size
008	8 (Eco)
010	10 (Red)
012	12 (Blue, Red)

83 Blue 84 Red 89 Eco

NEW BOULDER | 885K

The unique circular lug design on the New Boulder is great for climbing and seasonal climates. The MegaGrip compound used is rugged and durable. 4.2mm thick.



8000+

Code	Size
006	6

82 Grey 84 Red



LIENZ | 2094

A dress option. Thin, trimmable, has a defined heel construction on most dress shoes. Forepart: 5.8mm thick Heel: 19.6mm thick



8003+

Code	Size
007	7-8 (Red, Cream)
009	9-10 (Blue)
011	11-12 (Blue)

14 Red 16 Cream 19 Blue

ETON | 2055S

Ideal for the production of footwear with classic constructions. Forepart: 5.8mm thick Heel: 8.5mm thick

8001+ SOLES 62 / 69 HEELS 72 / 79

Code	Size
056	5-6
078	7-8
090	9-10
112	11-12
134	13-14



62 Grey 69 Norma (Soles) 72 Grey 79 Norma (Heels)



SPEKTRA 2145S | MIRROR HEELS 5324S

Men's die-cut rubber sole, perfect for dress and casual shoes.



8001+ SOLES 90/93/95

Code	Size
357	35-37
413	41-43
446	44-46

HEELS 80/83/85

Code	Size
437	35-37

90 Black 93 Norma 95 Mai Tai (Soles) 80 Black 83 Norma 85 Mai Tai (Heels)

Toll Free: 1-800-663-9893

*All volume prices are based on same size, thickness and colour, except volume assorted prices: same group. Standard shipping terms apply. Prices subject to change without notice.

LINK | 586K

A flat sole in a 5 mm extra-soft rubber compound. Excellent grip, wide range of colors and broad template.

295110+ Black

Code	Size
006	6
012	12
015	15



MARMOLADA | 171C

A nice variation of our classic heritage Montagna sole, a bit thinner and lighter. It usually serves itself better in a more fashion / lifestyle application on Men's boots.

8001+

Code	Size
135	13.5-15



24 Red 26 White

ACQUA | 2900

Made from a minimum of 30% recycled rubber. High-quality compound formulation.

800118358 Brown
35-38
800119+ Blue
35-38, 39-42



SCOOTER|984K

Resole your sneakers with the throwback Scooter and scoot around town today!
6.4mm (12 iron) thick.

800348+

Code	Size
007	7-8
009	9
011	11
014	14



43 Yellow | 48 Orange

NewFlex

RIPPLE | S1559

Rubber
16.4mm thick (31 iron)



8004+

Code	Size
380	38 (Green)
400	40 (Green, Blue)
460	46 (Black)

40 Black 47 Green 48 Blue

BOLOGNA | 810K

The Bologna is a blown rubber sole in a variety of colors to enhance your personal style. Forepart: 8mm thick Heel: 25.4mm thick

800507+ Green

Code	Size
412	41-42
434	43-44
470	47



ROCCIA | 528K

The classic "construction boot" sole. Forepart: 10.2mm Heel: 25.6mm thick

8005+

Code	Size
007	7-8
010	10.5
012	12.5
014	14.5



32 Grey | 37 Green | 39 Blue



CHRISTY THICK | 377K

it's lightness and durability are significant for both shoes and boots as well as orthopedic footwear.

800468+ Red

Code	Size
012	12



TWEETY | 9107

For boot shoes.



8002+

Code	Size
370	37-39 (White)
400	40

30 Black 36 White

GLOXI | 9105

A Blown Rubber Sole option with large sipes that bend and flex and provide max cushioning. A good dress option for the older crowd. Features Vi-Lite soling technology.

800320378 Black
37-38



LONG-HAUL | 516HS

50 % less weight than a solid rubber sole while providing a very good abrasion resistance.



8002+

Code	Size
006	6
009	9
012	12
014	14

70 Black 72 Grey (#6 only)

KLETTER | 1220

Classic lug sole. Requires heel wedge. 8mm. Black

8002+

Code	Size
378	37-38
390	39-40



LIVERPOOL | 2600

Women's size. Black
Forepart: 8mm
Heel: 9.5mm

295634+

Code	Size
378	37
390	39



BLOCK | 1012

Black
Forepart: 12mm
Heel: 14mm

295557+

Code	Size
390	39-40



ROCK SHEETS | 7509

With logo. Ideal for the resoling of climbing. 36.5"X25.5" Black.

292575+

Code	Thickness
050	5mm

